



2023 EUROPEAN TEAMS CHAMPIONSHIPS

STAGE 1 - A GROUPS

DIRECTIVES

The European Championships, hereinafter referred to as “the Event”, shall be organised according to the ETTU Regulations applicable for the Event i.e. Chapter “CT” of the ETTU Handbook.

In addition to these Regulations, the following requirements must be respected and fulfilled.

1. PARTIES INVOLVED

ETTU - European Table Tennis Union (Secretary General (ETTU/SG)),
The ETTU Member Associations, participating in the Event,

2. FIXTURES AND PLAYING SCHEDULE

Home Associations shall notify the Secretary General and the visiting Associations of the venues of matches no later than 6 weeks before the dates of matches. Home Associations shall inform at the same time the visiting Association of the brands and colours of floor, tables and nets which will be used in the match concerned.

Matches shall be played according to the agreed ETTU playing schedule and the start time of the match shall be notified by the home Association.

The match may be played on another day, preferably during the same week, of the ETTU playing schedule if both Associations agree to change the date. Such a change needs to be communicated to the ETTU Secretariat without delay and no later than 4 weeks before the agreed date, which shall be binding for both Associations.

Matches shall not be played before the previous scheduled round and not after the next scheduled round.

The home Association may arrange a men’s and a women’s match at a playing hall on the same date, with different start times or with the same start time.

3. SYSTEM OF PLAY

In each group teams will play each other in 2 matches (home and away) in order to determine a final ranking order for each group.

The order of play is as follows:

12-13 October 2022	Round 1 : 1 - 3
15-16 October 2022	Round 2 : 2 - 1
26-27 October 2022	Round 3 : 3 - 2
06-11 December 2022	Round 4 : 3 - 1
2023 TBD	Round 5 : 1 - 2
2023 TBD	Round 6 : 2 - 3

The 6 group A winners and the 6 group A runners-up will proceed directly to the final stage of the Championships.

2023 EUROPEAN TEAMS CHAMPIONSHIPS

STAGE 1 - A GROUPS

DIRECTIVES

The group A position 3 teams will proceed to stage 2 to compete for the remaining places in the final stage.

4. SPORT FACILITIES

4.1. PLAYING COURT

- **dimension of playing court :** preferably 16,8 x 8,4 m (minimum 14 x 7 m)
- **lightning source :** minimum 5 m above the floor
- **lightning :** minimum 1000 Lx, without reflection on the table
- **show court :** LED surroundings, A-boards, B boards
- **flooring :** ITTF approved floor
- **floor advertisements :** Floor advertisements shall comply with ITTF Regulations for International Competitions
- **equipment :** ETTU suppliers pool

4.2. VENUE REQUIREMENTS

- **spectators capacity :** minimum 500 seats
- **temperature :** between 18 and 22 degrees Celsius
- **daylight :** daylight coming in through windows or other openings or apertures has to be covered
- **changing rooms :** at least 3, 1 for each of the teams and 1 for the referee/umpires) of good standard, with enough showers and toilets
- **announcer :** a suitable speaker service shall be provided in the playing hall, during the whole duration of the match.
- **benches :** behind the playing court must be chairs (benches) for six persons for each team. Neither team can have more than six persons present
- **internet :** minimum 20 Mb/s uploads speed of network must be provided for the ETTU needs (live ticker, streaming). That network must be independent of any other network in the hall

2023 EUROPEAN TEAMS CHAMPIONSHIPS

STAGE 1 - A GROUPS

DIRECTIVES

4.3. HOME ASSOCIATION REQUIREMENTS

- **flatness and thickness devices :** each home association must have an ITTF flatness and thickness device and shall provide it for the Referee at least 60 minutes before the match starts
- **Time-Out Clock :** each home association must have a Time-Out-Clock and shall provide it for the Referee at least 60 minutes before the match starts
- **venue seating capacity:** the home association must guarantee their guest Association at least 10% of the seating capacity for spectators and upon request provide in advance information on purchasing prize
- **water and snacks :** water, fruits and snacks must be provided for the visiting team during the practice and match

The playing conditions must be checked and approved by the Referee, whose decision shall be final. Even in case of disputes about the playing conditions the teams are obliged to play the match.

The organizing Association shall make sure that the match is always recognizable as an ETTU event.

5. RIGHTS AND OBLIGATIONS

5.1. EQUIPMENT

The official ball to be used for all matches shall be the Nittaku Premium 40+*** white.

All equipment rights (except the adopted Nittaku ball) belong to the home Association of each match.

The home Association must use only playing equipment provided by one or more ETTU Suppliers Pool member companies

5.2. LIVE TICKER

Each Association has to provide necessary conditions for a live-ticker system made by the ETTU.

Live-ticker results will be shown on the ETTU website.

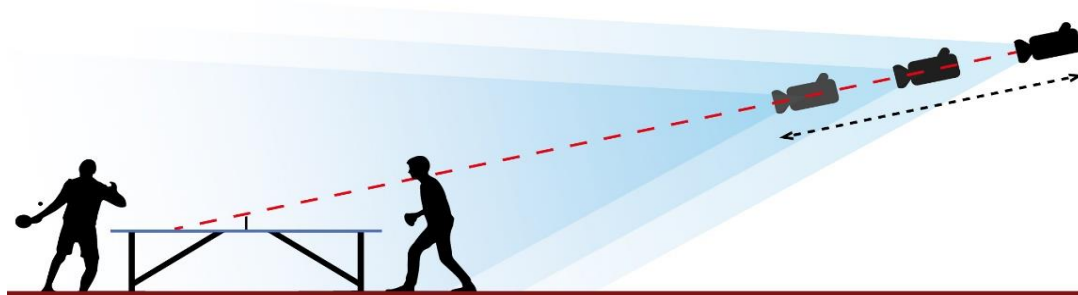
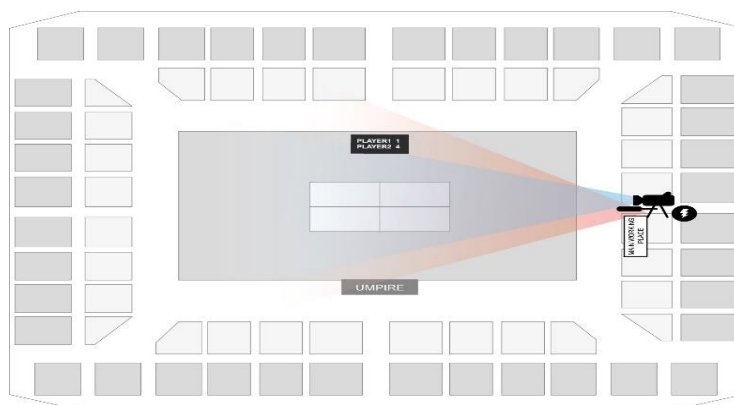
The detailed instructions will be made available in due time.

5.3. LIVE STREAMING

Each Association has to provide live streaming which will be shown on the ETTU.tv website

Live streaming requirements :

- **minimum number of camera's :** 1
- **position of main camera :** behind the table



The streaming production team must be available one day before the match to conduct the rehearsal stream with the ETTU person in charge

- **streaming live-scoring graphic :**

it is a mandatory requirement for the live streaming graphic (ETTU marketing team will provide the graphic design, while organizers are responsible for the module which will run the live scoring)

- **streaming production team :**

the home association is required to provide the contact detail of the streaming production team at least ten days before the match



2023 EUROPEAN TEAMS CHAMPIONSHIPS STAGE 1 - A GROUPS DIRECTIVES

The detailed streaming requirements will be shared with the streaming production team
In case the ETTU Media Partner decides to produce an internet livestream, the home Association needs to provide the following technical requirements at its own charge:

-an appropriate internet connectivity with a minimum UPLOAD bandwidth of 20 megabit/sec

-to ensure the event's live and/or delayed transmissions, accomplishing all the ETTU Media Partner's technical requests

-ETTU Media Partner's staff with the accreditations required for getting access to all necessary locations

-adequate spaces and working areas for ETTU and its Media Partner's staff

*ETTU grants the host Associations the permission to produce and broadcast a signal for internet live streaming but the host Association has to guarantee a geo-block (if technically possible) of the streaming on its national territory and has to provide the ETTU Media Partner with the signal free of charge.

Technical instructions for internet live streaming will follow in due time.

6. PRACTICE

Practice (at least 2 hours) shall be arranged for the visiting team the evening before the match is to be played as well as during the day of the match under the same conditions as for the home team.

7. MATCH PROCEDURE

A team shall consist of maximum 4 players.

A match shall consist of up to 5 singles and shall be played on 1 table.

In all matches the home team shall be A1, A2, A3 and the visiting team B1, B2, B3. After the second singles in a team match, player N° 4 may replace player A1 or player A2 (home team) or player B1 or B2 (away team). Such a substitution of a player must be announced by the respective team captain to the Referee at the latest before the start of the third singles match.

The order of play shall be A1 v B2, A2 v B1, A3 v B3, A1 v B1, A2 v B2 and the team match shall end when one team has won 3 individual matches, each the best of 5 games.

There shall be only one interval of not more than 15 minutes after the second individual match. The home Association shall inform the visiting Association and the Referee, latest before the start of the first individual match, of the arrangements of the interval

8. DRESS/COLOURS

The home Association shall notify the visiting Association, no later than 14 days before the date of the match, of its playing colours and the visiting team shall wear different colours. If the home Association fails to do so and the colours are not sufficiently different, the home Association shall change.

9. REFEREES AND UMPIRES

The ETTU Secretary General, in coordination with the Umpires and Referees Committee, shall arrange for a neutral International Umpire to fulfil the Referee's duties. The home Association shall provide 2 International Umpires to perform the responsibilities of the umpire and assistant umpire. The daily allowance for the umpires is according to host country regulations, but it must not be less than 30€ per day.

The International Referee appointed by the ETTU shall receive from the home Association a daily allowance of 100€ per working day.

The Blue Badge Umpire appointed by the ETTU as a Tournament Referee shall receive from the home Association a daily allowance of 60€ per working day.

The travel expenses, agreed in advance by ETTU, (by economy class train or flight, or by car at 0,30€ per km, and visa costs) shall be reimbursed by the home Association either by bank transfer before the match or latest in cash upon arrival. ETTU shall reimburse the home Association 50% of the neutral International Umpire's travel expenses (excluding the daily allowance).

Immediately after a match the Referee shall complete an official report form and send it together with the official score sheet to result@ettu.org by email and competition@ettu.org

10. HOSPITALITY / ACCOMMODATION / TRANSPORTATION

The home Association shall propose to the visiting Association a hotel of good standard (minimum 3 stars) and inform them about the room rates and the hotel's website link without delay and no later than 6 weeks before the dates of matches. If the visiting Association does not agree on the proposal, the visiting Association is free to choose another hotel. Booking and payment of the hotel is the obligation of the visiting Association. The transport from and to the local airport or from and to the railway station (home Association to decide if transport from and to the airport or from and to the railway station) to the hotel and to the playing hall and back must be provided free of charge by the home Association. If the visiting Association chooses another hotel than the one proposed by the home Association, transportation must be only taken over by the home Association if the distance to the playing hall is not more than 10 km further away than the proposed hotel from the playing hall.

Lunch and dinner must be provided free of charge by the home Association on the day when a match is played.

Meal times shall be flexible and co-ordinated with the duration of the match in order to allow the players to have a meal after the match.

The maximum number of persons of the visiting Association entitled for free transportation and meals as written above shall be 6 persons.



2023 EUROPEAN TEAMS CHAMPIONSHIPS

STAGE 1 - A GROUPS

DIRECTIVES

11. TV AND IPTV RIGHTS

ETTU holds the following rights for every team match within the European Championships:

The International TV rights

The exclusive rights for Internet TV and Internet Live Streaming for the matches produced by ETTU's Media Partner (ETTU has given this right to its Media Partner)

The non-exclusive rights for Internet TV and Internet Live Streaming for the matches produced by the host Association

The non-exclusive rights for Data and Scoring

Domestic TV rights, advertising rights and gate receipts belong to the home Association of each match.

A host Association deciding to produce a TV signal shall also make the signal available free of charge to the ETTU Media Partner (either via European Standard Satellite or online stream).

12. PRESS AND MEDIA

All the Associations taking part in the event are kindly invited to cooperate with the ETTU Press Officer (press@ettu.org) and provide with all information concerning their national teams, their home matches, photographs and any other useful information.

Media persons shall be provided with all necessary services, including special seats near the playing court and direct access to internet.

It is recommended the home Association to issue a programme leaflet for every home match. This programme leaflet and any other promotional material (electronic and print) shall include the ETTU logo, the 2023 EUROPEAN TEAMS CHAMPIONSHIPS logo and the NITTAKU logo.

13. FLAGS

The following flags shall be hoisted in the playing hall :

- the flag of the home Association
- the flag of the visiting Association

14. PENALTIES

Associations may be fined for any contravention to the provision of these Directives