



EUROPEAN CHAMPIONS LEAGUE WOMEN 2020-2021 HYGIENIC GUIDELINES LINZ 3.-8.12.2020

Pre and at arrival

All participants are encouraged to be careful at least 10 days before travelling to the competition to not meet too many people, not to visit crowded places, to keep safety distance, wear face masks where necessary, to regularly disinfect and wash hands etc.

Participants of a same team are recommended not to travel with the whole team together but as separately as possible in order to reduce the infection risk.

All participants are obliged to present a negative PCR-based Corona test taken within 72 before arrival. Depending from which country (area) participants are travelling to Austria, please check here: <https://www.austria.info/en/service-and-facts/coronavirus-information/entry-regulations> , the PCR test needs to be confirmed by a medical doctor, document available here:

https://www.ris.bka.gv.at/Dokumente/BgblAuth/BGBLA_2020_II_263/COO_2026_100_2_1752893.pdf

All Participants will have to undergo also a quick test in the Park Hotel in Linz on 2.12.2020 starting 0800 CET and as soon as the result is available and negative (not longer than 1 hour for the result) they are free to move around (but stay inside the ECL bubble).

The teams should arrive at least 2 days before the event start.

The names of the persons and their travel details shall be confirmed by latest 20.11.2020 (later changes are only possible due to a positive Covid test of member of the team, illness or injury). In this list, each team shall nominate 1 person of their delegation being the responsible person of their team for Covid / hygienic matters.

Testing procedure in Linz and consequences

All Participants will have to undergo a quick test in the Park Hotel in Linz on 2.12.2020 starting 0800 CET and as soon as the result is available and negative (not longer than 1 hour for the result) they are free to move around (but stay inside the ECL bubble).

If one person is tested positive at quick test, a PCR-based Corona test will follow immediately. The result of this test is available within 24 hours.

If the PCR test reconfirms a participant positive, he/she will have to go into quarantine for 10 days and the participant is out of the competition.

The health authority initiates further steps, these must be supported by the club concerned, the organiser and the host.

Documentation of which people had contact with the person concerned and recording of the type of contact, has to be provided.



Participants with symptoms of a respiratory infection will be refused entry to the venue and entry will be only granted again after negative result of a further quick test.

If a participant is at any time positive, the rules of the Austrian health office apply.

Proceedings in Linz

Accreditation for participants (clubs' delegation) will be in the hotel Park Inn.

Accreditation for media, press and the production teams will be at the playing venue Sportpark Lissfeld, at the entrance of the gallery.

Participants will have breakfast, lunch and dinner in the official hotel (Park Inn). There will be a separate dining room reserved only for Champions League participants. Not more than 2 persons of one team are allowed to sit together on the same table while dining. Participants shall wear face masks until seated and when leaving the dining table.

All participants will be separated from other hotel guests on two separate floors.

Beds in a double room will be at a distance of at least 1.5m.

Participants shall not leave the hotel, only for going to and from the venue for matches and practice and shall not use public transport.

Participants leaving unauthorised the bubble areas will be excluded from the competition. The surroundings of the hotel and the Sport Park are considered as an inclusive part of the bubble area.

In case of force majeure and with prior authorisation by ETTU, a participant may be granted an exception to temporarily leave the bubble. In any case re-entry to the bubble and competition is only given by a further negative test and this test is on charge of that participant.

The teams shall have no contact to the other teams, shall wear face masks, shall not go out of the bubble without ETTU authorisation, shall use the disinfection gels which are made at disposal, shall keep distances to other persons of at least 1m and shall follow the marked walking, practicing routes (directions).

Participants of a team stay together but with distance to each other as far as possible.

All participants will be brought from the hotel to the event hall (and vice-versa) by drivers who have a negative Covid-19 test result. All drivers are required to wear a face mask. In a double seat, only one person is allowed to sit.

Staff, media and press are tested on 30.11.2020, they keep distance and shall never cross bubble participants nor have meals taken at the same time than participants and wear FFP2 masks.

A team shall consist of up to 7 persons. A team may ask for a special permit to ETTU and the LOC to have a person entering after the 1st December (for example the club's President). For the late coming person, a negative pre-arrival PCR test and a quick test in Linz is needed (same condition as for other participants) to enter the bubble and to stay with the team.

A medical doctor or medical service will be available throughout the competition.

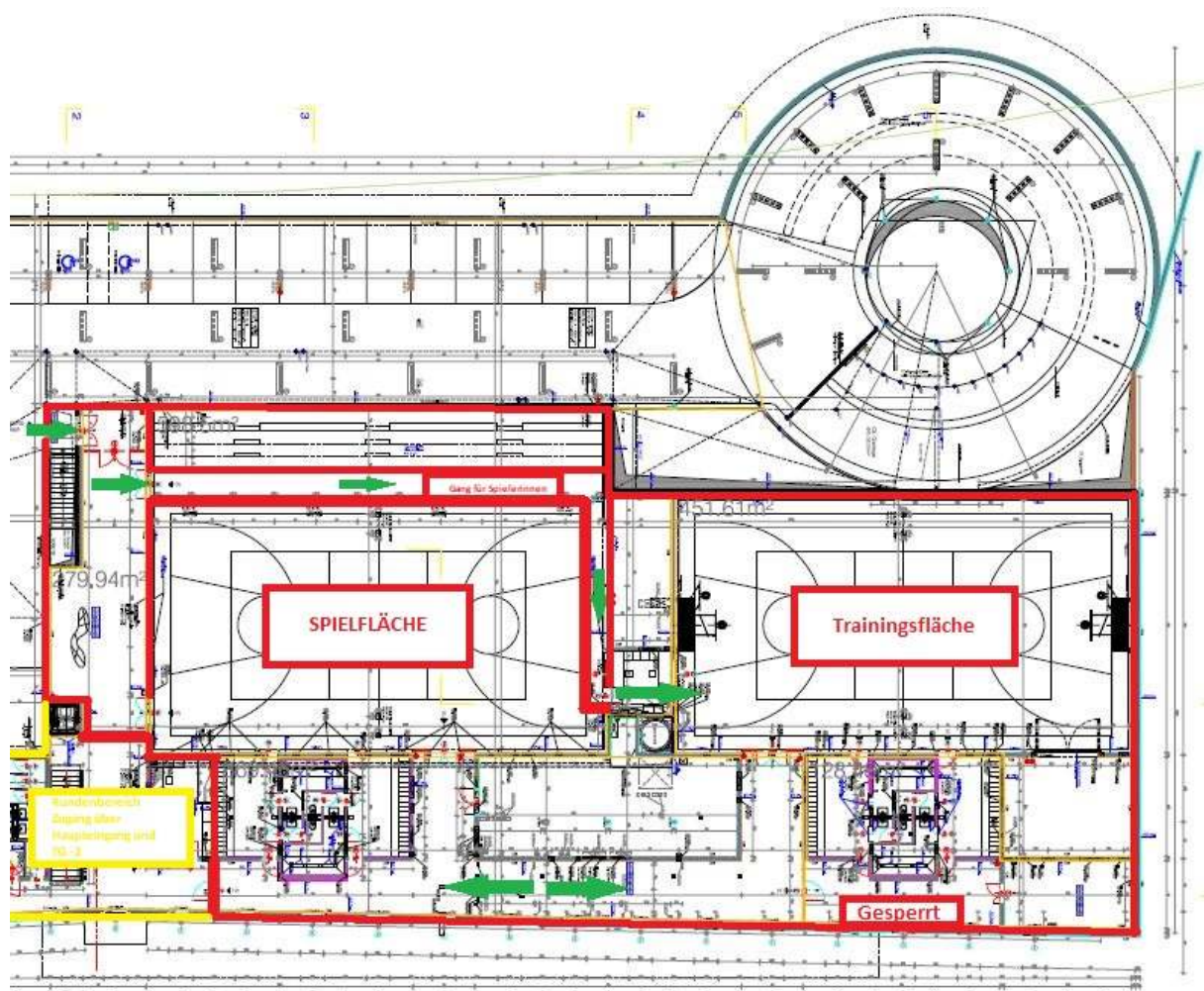
Only registered players and the teams' delegation confirmed to ETTU, the umpires and referees, staff and officials appointed by ETTU and the organising team of the host (LOC), as well as accredited media representatives such as the press, production teams for live streams and TV teams are permitted entry to the competition venue.

No spectators are allowed.

Representatives of press and media have to be seated in the stands with a minimum of 1m safety distance and wear a face mask.

Disinfectant dispensers are available at all access points.

In case the sports parc is opened by the authorities on December 1st 2020, a separation of the sports parc customers and the Champions League participants will be ensured by erected walls.



The bubble will start on 2.12.2020 after test results are available then training sessions are possible (for the participants having already a negative test).

Participants needing a PCR test for returning to their home country shall inform the LOC within 30.11.2020. The LOC will then organise the testing on the participants' cost.



Match competition and practice measures

No handshake between players and between players and umpires.

No change of ends after games (sets) but change of ends after each individual match. Tables will be disinfected after each individual match. 4 towel boxes available at the FoP (for each team 1 at each side). Air in the playing hall is permanently circulated by the in-house ventilation.

1 hour before a team match starts, a draw will be made to define which team is A and which team is B.

Teams have to confirm by latest on **Monday, 30th of November** their 2 sets of playing clothing (shirts), with a clear difference in the main colour, to use for the matches and send a picture of both by email to competition@ettu.org, and confirm their 1st and 2nd choice.

In case for a scheduled match the 2 teams have the same or similar main colour on their shirt of their 1st choice, a draw will be made 1 hour before the team match starts to define which team can use for the said match their 1st choice shirt.

Team composition (line up) shall be confirmed by team managers to the Referee/Umpire in the call area latest 40 minutes before the start of the match.

There will be 70 selected balls for a team match. 35 balls will be used in an individual match, the next 35 will be used for the following match and in this time the first 35 will be cleaned so they can be reused for the third match etc. Each team can select in the call area 35 balls, 40 minutes before the team match starts (1 member per team only).

During a match, the umpire throws before/after each point a new ball to the server.

Balls will be picked up after every game only, by ball collectors (kids or adults). Ball collectors shall respect social distancing to players on the field, to team members in the box and to umpires at any time.

Umpires have to bring to the match their own score board.

It is not allowed to wipe off (dry) hands on the table surface.

In case the table surface needs to be dried during an individual match, there will be on each side either a separate towel or papers which the player (on the table side that needs drying) shall use to dry the table surface.

Playing tables and boxes for towels will be disinfected after each individual match.

It is not allowed to breath on the ball.

Face masks have to be worn at any time by all persons when at the playing and training hall with sole exception of the players during play and during training.

Social distancing of 1,5 m when presenting the teams, in the player boxes etc.

No training possible during competition days at the competition table.



Each team is warming up on the warming up tables in the training hall separately and before change of team warm up, the table will be disinfected.

There will be 5 slots (team matches) per day in the group stage with always 2.5 hours between slots. Practice on the match table during the qualification groups will not be allowed. For the play-off matches onwards warming up on match table will be allowed.

Changing rooms latest 20 minutes before match start available to the teams and until maximum 5 minutes after the end of the team match. Use of the sanitary facilities (showers) is forbidden; change of clothes in the changing room is permitted. These will be disinfected before and after a team enters.

All teams can practice also on the competition table the day before competition start and a schedule will be prepared.

The draw for the group stage will be made on 2.12.2020 in the hotel when test results are available, together with a press conference. The draw will be conducted by the Referee and the ETTU competition manager.

The Draw for the play-off round will be made after completion of the group stage. The 3 group runners up will be freely drawn on position 1,2 and 3, only in case of 2 teams from a same country, these shall play the first match.

Jurisdiction

COVID-19 responsible person LOC:

Günther Renner, guenther.renner@froschberg.at +43 676 9581858

COVID-19 responsible person ETTU:

Alen Ivancin, Champions League event manager, competition@ettu.org +385 992065844

Wherever in this document reference is made to authorisation or permission, the persons in charge for ETTU and for the LOC will be the same as the above stated COVID-19 responsible persons.

A team wishing to protest about any aspect of a match or against any other matter, shall address to the Jury.

The Jury shall consist of 1 representative of the organising club (LOC), 1 ETTU representative and the Referee. Each member of the Jury shall have 1 vote and any decision is taken by the majority of the votes.

Acceptance from participants

All participants have to sign upon arrival acceptance of this hygienic guideline document in order to be accepted entry.



I herewith confirm having read and understood the hygienic guidelines for the ECLW in Linz and with my signature confirm acceptance.

Name: _____

Member of team (write club name): _____

Date: _____

Signature: _____