



# 2023 EUROPEAN TEAMS CHAMPIONSHIPS

## STAGE 1 - B GROUPS

### DIRECTIVES

The European Championships, hereinafter referred to as "the Event", shall be organised according to the ETTU Regulations applicable for the Event i.e. Chapter "CT" of the ETTU Handbook.

In addition to these Regulations, the following requirements must be respected and fulfilled.

#### 1. PARTIES INVOLVED

ETTU - European Table Tennis Union (Secretary General (ETTU/SG),  
The ETTU Member Associations, participating in the Event,

#### 2. PROSPECTUS

The Secretary General and the host Associations will prepare and circulate a Prospectus giving all relevant details.

Matches shall be played according to the agreed ETTU playing schedule, on Saturday 15th and Sunday 16th October 2022, with a maximum of 2 team matches on a day per team.

Matches shall not start earlier than 1000 local time.

#### 3. SYSTEM OF PLAY

There will be 6 men's groups and 5 women's groups, playing with a round-robin system during the weekend, with the group winners and group runners up proceeding to stage 2.

Order of play :

Saturday, 15 October 2022 at 11:00 local time:                      Round 1 : : 1 - 3

Saturday, 15 October 2022 at 19:00 local time:                      Round 2 : : 2 - 1

Sunday, 16 October 2022 at 11:00 local time:                      Round 3 : : 3 - 2

#### 4. SPORT FACILITIES

##### 4.1. PLAYING COURT

- dimension of playing court : minimum 14x7 meters
- lightning source :                      minimum 5 m above the floor
- lightning :                                  minimum 800 Lx, without reflection on the table
- show court :                              A-boards / B boards
- flooring :                                    ITTF approved floor
- floor advertisements :                  Floor advertisements shall comply with ITTF Regulations for International Competitions
- equipment :                              ETTU suppliers pool

## 2023 EUROPEAN TEAMS CHAMPIONSHIPS

### STAGE 1 - B GROUPS

# DIRECTIVES

#### 4.2. VENUE REQUIREMENTS

- spectators capacity : minimum 200 seats
- temperature : between 18 and 22 degrees Celsius
- daylight : daylight coming in through windows or other openings or apertures has to be covered
- changing rooms : at least 3, 1 for each of the teams and 1 for the referee/umpires) of good standard, with enough showers and toilets
- announcer : a suitable speaker service shall be provided in the playing hall, during the whole duration of the match.
- benches : behind the playing court must be chairs (benches) for six persons for each team. Neither team can have more than six persons present
- internet : minimum 20 Mb/s uploads speed of network must be provided for the ETTU needs (live ticker. That network must be independent of any other network in the hall

#### 4.3. HOME ASSOCIATION REQUIREMENTS

- venue seating capacity: the home association must guarantee the guest Associations at least 10% of the seating capacity for spectators and upon request provide in advance information on purchasing prize
- water and snacks : water, fruits and snacks must be provided for the visiting team during the practice and match

The playing conditions must be checked and approved by the Referee, whose decision shall be final. Even in case of disputes about the playing conditions the teams are obliged to play the match.

The organizing Association shall make sure that the match is always recognizable as an ETTU event.

## 5. RIGHTS AND OBLIGATIONS

### 5.1. EQUIPMENT

The official ball to be used for all matches shall be the Nittaku Premium 40+\*\*\* white.

All equipment rights (except the adopted Nittaku ball) belong to the home Association of each match.

The home Association must use only playing equipment provided by one or more ETTU Suppliers Pool member companies

### 5.2. LIVE TICKER

Each organizer has to provide the necessary conditions for a live-ticker system made by the ETTU.

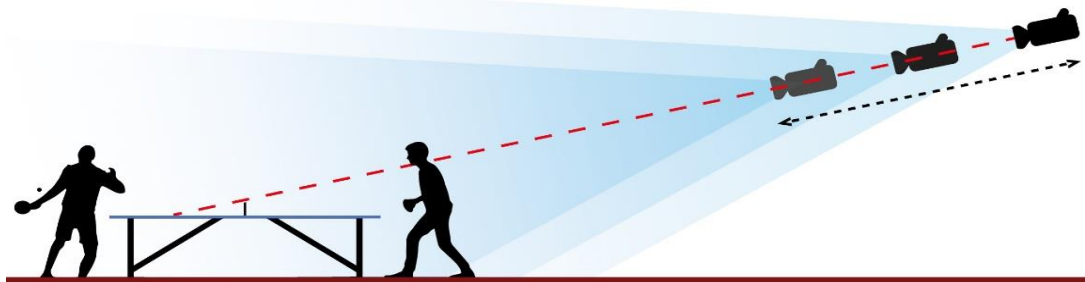
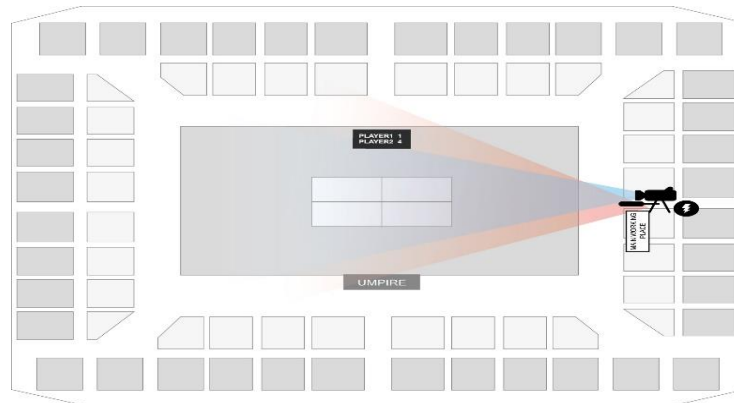
Live-ticker results will be shown on the ETTU website.

The detailed instructions will be made available in due time.

### 5.3. LIVE STREAMING

ETTU recommends (not mandatory) to organizers to provide the live streaming with following conditions:

- minimum number of camera's : 1
- position of main camera : behind the table



## 2023 EUROPEAN TEAMS CHAMPIONSHIPS STAGE 1 - B GROUPS DIRECTIVES

The streaming production team must be available one day before the match to conduct the rehearsal stream with the ETTU person in charge

**- streaming live-scoring graphic :**

it is a mandatory requirement for the live streaming graphic (ETTU marketing team will provide the graphic design, while organizers are responsible for the module which will run the live scoring)

**- streaming production team :**

the home association is required to provide the contact detail of the streaming production team at least ten days before the match

In case the ETTU Media Partner decides to produce an internet livestream, the home Association needs to provide the following technical requirements at its own charge:

**-an appropriate internet connectivity with a minimum UPLOAD bandwidth of 20 megabit/sec**

**-to ensure the event's live and/or delayed transmissions, accomplishing all the ETTU Media Partner's technical requests**

**-ETTU Media Partner's staff with the accreditations required for getting access to all necessary locations**

**-adequate spaces and working areas for ETTU and its Media Partner's staff**

Technical instructions for internet live streaming will follow in due time.

### **6. PRACTICE**

Practice (at least 2 hours) shall be arranged for the guest's teams the evening before the match is to be played as well as during the day of the match under the same conditions as for the home team.

### **7. MATCH PROCEDURE**

**A team shall consist of maximum 4 players.**

**A match shall consist of up to 5 singles and shall be played on 1 table.**

**In all matches the home team shall be A1, A2, A3 and the visiting team B1, B2, B3. After the second singles in a team match, player N° 4 may replace player A1 or player A2 (home team) or player B1 or B2 (away team). Such a substitution of a player must be announced by the respective team captain to the Referee at the latest before the start of the third singles match.**

**The order of play shall be A1 v B2, A2 v B1, A3 v B3, A1 v B1, A2 v B2 and the team match shall end when one team has won 3 individual matches, each the best of 5 games.**

## 2023 EUROPEAN TEAMS CHAMPIONSHIPS STAGE 1 - B GROUPS DIRECTIVES

### 8. DRESS/COLOURS

The host Association shall notify the visiting Associations, no later than 14 days before the dates of the matches, of its playing colours and the visiting teams shall wear different colours

Opposing teams shall wear shirts that are of sufficiently different colours to enable them to be easily distinguished by spectators.

Associations shall have 2 sets of shirts available of different colours.

Where opposing teams have a similar shirt and cannot agree which of them will change, the decision shall be made by the umpire by lot.

### 9. REFEREES AND UMPIRES

The ETTU Secretary General, in coordination with the Umpires and Referees Committee, shall arrange for a neutral International Umpire to fulfil the Referee's duties. The home Association shall provide 2 International Umpires to perform the responsibilities of the umpire and assistant umpire. The daily allowance for the umpires is according to host country regulations, but it must not be less than 30€ per day.

The International Referee appointed by the ETTU shall receive from the home Association a daily allowance of 100€ per working day.

The Blue Badge Umpire appointed by the ETTU as a Tournament Referee shall receive from the home Association a daily allowance of 60€ per working day.

The travel expenses, agreed in advance by ETTU, (by economy class train or flight, or by car at 0,30€ per km, and visa costs) shall be reimbursed by the home Association either by bank transfer before the match or latest in cash upon arrival. ETTU shall reimburse the home Association 50% of the neutral International Umpire's travel expenses (excluding the daily allowance).

Immediately after a match the Referee shall complete an official report form and send it together with the official score sheet to [result@ettu.org](mailto:result@ettu.org) by email and [competition@ettu.org](mailto:competition@ettu.org)

## **10. HOSPITALITY / ACCOMMODATION / TRANSPORTATION**

### **10.1. The host association is the Association who is playing in this group**

The host Association shall propose to the visiting Association a hotel of good standard (minimum 3 stars) and inform them about the room rates and the hotel's website link without delay and no later than 6 weeks before the dates of matches. If the visiting Association does not agree on the proposal, the visiting Association is free to choose another hotel. Booking and payment of the hotel is the obligation of the visiting Association. The transport from and to the local airport or from and to the railway station (home Association to decide if transport from and to the airport or from and to the railway station) to the hotel and to the playing hall and back must be provided free of charge by the home Association. If the visiting Association chooses another hotel than the one proposed by the home Association, transportation must be only taken over by the home Association if the distance to the playing hall is not more than 10 km further away than the proposed hotel from the playing hall.

Lunch must be provided free of charge by the home Association on the day when a match is played.

Meal times shall be flexible and co-ordinated with the duration of the match in order to allow the players to have a meal after the match.

The maximum number of persons of the visiting Association entitled for free transportation and meals as written above shall be 6 persons.

### **10.1. The host association is the Association who is not playing in this group**

The host Association will offer to the visiting teams package which must include :

- free hospitality (accommodation, breakfast, lunch and dinner)
- free transport from the official airport
- free transport venue-hotel

The price per day/person in the double room can not exceed 130€ in the 4\* hotel

## **11. TV AND IPTV RIGHTS**

ETTU holds the following rights for every team match within the European Championships:

**The International TV rights**

**The exclusive rights for Internet TV and Internet Live Streaming for the matches produced by ETTU's Media Partner (ETTU has given this right to its Media Partner)**

**The non-exclusive rights for Internet TV and Internet Live Streaming for the matches produced by the host Association**

**The non-exclusive rights for Data and Scoring**



## **2023 EUROPEAN TEAMS CHAMPIONSHIPS**

### **STAGE 1 - B GROUPS**

# **DIRECTIVES**

**Domestic TV rights, advertising rights and gate receipts belong to the home Association of each match.**

**A host Association deciding to produce a TV signal shall also make the signal available free of charge to the ETTU Media Partner (either via European Standard Satellite or online stream).**

**\*ETTU grants the host Associations the permission to produce and broadcast a signal for internet live streaming but the host Association has to guarantee a geo-block (if technically possible) of the streaming on its national territory and has to provide the ETTU Media Partner with the signal free of charge.**

#### **12. PRESS AND MEDIA**

**All the Associations taking part in the event are kindly invited to cooperate with the ETTU Press Officer ([press@ettu.org](mailto:press@ettu.org)) and provide with all information concerning their national teams, their home matches, photographs and any other useful information.**

**Media persons shall be provided with all necessary services, including special seats near the playing court and direct access to internet.**

**It is recommended the home Association to issue a programme leaflet for every home match. This programme leaflet and any other promotional material (electronic and print) shall include the ETTU logo, the 2023 EUROPEAN TEAMS CHAMPIONSHIPS logo and the NITTAKU logo.**

#### **13. FLAGS**

**The following flags shall be hoisted in the playing hall :**

- the flag of the home Association**
- the flag of the visiting Association**

#### **14. PENALTIES**

**Associations may be fined for any contravention to the provision of these Directives**