



**EUROPEAN TABLE TENNIS UNION**



# **ECLW - DIRECTIVES 2020/2021**

v. **27.11.2020**

The European Champions League, hereinafter referred to as “the Event”, shall be organised according to the ETTU Regulations applicable for the Event, i.e. Chapter “K” of the ETTU Handbook.

The following directives provide a supplementary framework to the European Club Competitions Women (ECCW) regulations “K” and must be followed by all participating Clubs.

A club failing to do this shall be fined by the Club Competition Official and eventually made liable for the payment of all documented and undisputed damages claimed by ETTU, Sportradar or the sponsor(s).

The directives may be reviewed and amended in line with the decisions of the ECLW Management Board and the ETTU Executive Board to reflect updates to the general organisation and planning of the European Club Competitions Women.

## 1. PARTIES INVOLVED

- ETTU – European Table Tennis Union, (Secretary General (ETTU/SG)).
- The Clubs participating in the Event.
- The Club Competition Official.
- Sportradar – ETTU’s Official Media and Data Partner.
- The sponsors, if any.
- the ECLW Management Board – having the authority to give dispensation to the clubs for variations in the directives. Dispensation shall be given with the majority of the votes in close co-operation with the Club Competition Official.  
The ECLW Management Board is composed by 3 club representatives (elected by the participating ECLW clubs annually) and 3 representatives of the ETTU (confirmed by the ETTU Executive Board).

## 2. QUALIFICATION AND REGISTRATION

2.1 The European Champions League - Women shall be open for the clubs according to the European Club Competition seeding list based on the results of the clubs from the last 3 European Club Competitions’ seasons.

Result points allocation: from the 2017-2018 season 20%, 2018-2019 season 30% and 2019-2020 season 50%. Points for the clubs having reached the Semi-Finals in the 2019-2020 season (and not played due cancellation) received average sum of points for the Winner, Runner-up and Semi-Finalist.

Points allocation

CL winner	1000
CL runner up	800
CL SF	600
CL QF	400
Europe Cup winner	500
Europe Cup runner up	300
Europe Cup SF	250
Europe Cup QF	200
CL Group 4 <sup>th</sup>	170

Europe Cup R4	150
Europe Cup R3	100
Europe Cup R2 (3rd)	60
Europe Cup R2 (4th)	40
Europe Cup R1 (3rd)	20
Europe Cup R1 (4th)	10
Europe Cup R1 (5th)	5

In case of equality in total points for clubs in important positions at the seeding, the most recent result will decide, if equal the result in the previous season, if still equal the result in the season before that. If still equal, a draw by lot will be done.

Limitation of teams per national Association for ECLW is 3.

In case of 2 clubs qualified for the ECLW with the same management, ETTU can move the lowest ranked of the 2 clubs to the Europe Cup and the vacant position in ECLW may be filled by the next highest ranked club of the seeding, unless the national Association of that club reached already the maximum (3) available places in the ECLW.

2.2 **Wild cards** for up to 2 clubs may be given by ETTU / management board for clubs wishing to join the Champions League but not ranked high enough to reach a Champions League position by seeding.

Clubs asking for wild cards shall meet the following criteria in order to be accepted:

- show evidence of their playing venue to meet all directive criteria
- show evidence (preferably contract) of their top 3 players who will play ECC
- agree to pay a “buy in” of 10.000 € in addition to the entry fee, in case of “new clubs”.

Wild cards in Champions Leagues can only be given if the demanding club’s national Association’s quota (3) has not been achieved (clubs seeded 1-14 or 15).

These clubs will be seeded number 16 (in case of 1) or numbers 15 and 16 (in case of 2).

2.3 In a first phase, clubs are asked to fill in a preliminary entry form (deadline 29th May 2020). The preliminary entry registration is not mandatory.

In a second phase, clubs can register their club (deadline 30th June 2020). As the seeding is made by club ranking and no more by their players’ ranking, the players are registered at a later stage (phase 3 – provisional deadline 3rd September 2020).

2.4 A club wishing to enter the ECL - Women shall enter on or before the deadline via its national association by entering all requested data i.e. the name of the club, name of the responsible authorised club representative with its phone number and e-mail address (second phase).

Clubs shall then inform ETTU on or before the deadline (phase 3) their address of the playing hall, type of the floor for the home matches, colour of the shirts, equipment (tables, nets, balls\*), names of minimum six (6) and maximum ten (10) players and any other information requested.

The entry forms and information shall be sent by email to the ETTU Secretariat.

2.5 The Clubs concerned shall pay to the ETTU bank account the following entry fee within 7 days upon reception of the final seeding list and invoice:

1,000 € for clubs seeded 1-8

700 € for clubs seeded 9-16

- 2.6 Clubs with any debts stemming from ETTU Club competitions (ECCW) will be unable to participate.  
Clubs wishing to participate in the ECCW will only be accepted if the entry fees are transferred to the ETTU bank account according to article 2.5.
- 2.7 If a qualified club does not enter the ECLW or does not fulfil the requirements set up, the next highest ranked club of the seeding will fill the vacant position, unless the national Association of that club reached already the maximum (3) available places in the ECLW.
- 2.8 In case a qualified club does not participate in the ECLW, this club is not allowed to participate in the Europe Cup nor in the Europe Trophy neither.
- 2.9 After release of the seeding list, clubs have a 24 hours exit possibility. The clubs and the national Association of the clubs have to notify ETTU about their withdrawal by email. A cancellation fee of two hundred (200) € has to be paid to the ETTU bank account. All withdrawals after the exit possibility will be fined up to five thousand (5.000) €.
- 2.10 After the final registration deadline for club entries, the clubs and their National Associations will receive the final seeding list with the entered clubs.
- 2.11 After the final registration deadline for clubs' players, the clubs and their National Associations will receive a list with all entered players of the clubs and the clubs and National Associations have 24 hours to inform ETTU in case of any irregularity or mistake. If nothing is notified after this deadline, the players' list shall be final and no additional player can be accepted.
- 2.12 Every club engaged in the ECLW has to participate with one official representative in a meeting, and throughout the entire meeting, if convened by ETTU. For the 2020-2021 season a video conference may be arranged. A club failing to participate with one official representative throughout the entire meeting will be fined according to regulation K.4.13 with 1.000 Euros.
- 2.13 All matches shall be played at a venue located within 5 hours from CET.
- 2.14 The clubs and the national Associations of the clubs shall be responsible for its clubs and players with respect to entry fee, discipline, nominations, eligibility and in compliance with the ETTU regulations and directives.
- 2.15 The competition shall be conducted by the ETTU Secretary General, whose authority shall include changing dates and venues of matches whenever needed.

*\*in case of an official ball sponsor, the official ball sponsor's balls shall be used*

### **3 COMPOSITION OF TEAMS AND ELIGIBILITY**

- 3.1 Only nominated players are entitled to represent their club. After deadline for player registration, no additional player can be accepted for a club.  
A club shall nominate via its national Association 6 – 10 players.
- 3.2 A club can register up to 2 non-European\* players. In a team match up to 1 non-European\* player is entitled to play but the second non-European\* player, if given, can be only nominated as “reserve player” for replacing the other non-European\* player.
- 3.3. To define player nationality, ETTU will use the nationality as provided by the players' passports.
- 3.4. In case a player starts the competition as a non-European\* player and her nationality changes during the playing season she shall nonetheless continue to be considered as a non-European\* player up to the end of the current playing season.
- 3.5 After the entry deadline the ETTU Secretariat will send to the participating clubs and to their national Associations a list of the players nominated by each club.
- 3.6 A player shall compete only for one club, participating in ETTU club competitions, in the

period starting the day before the first round of the competition until the day after the last match in the competition.

That means a player may be registered for more than 1 club, in 1 or more Associations, participating in ETTU Club Competitions but the player shall only be registered for ETTU Club Competitions with 1 club.

The responsibility for player participation in competitions other than the ETTU Club Competitions remains with the national Associations and the clubs themselves.

3.7 A player having signed with a club to play ECCW and refuses to play for that club in ECCW can be suspended for the following ECCW season(s) by ETTU.

~~3.8 In order to be eligible for the KO rounds (Champions League and Europe Cup), players from Champions League group clubs need 50% participation in the group stage. No exception can be made. As presence count only if the player is confirmed on the official score sheet by the Referee. On that score sheet all players present in the playing venue before the match starts can be added. Club captains are responsible to check if their players present are written on the score sheet while signing it. No later request will be accepted.~~

\* A non-European player is a player with a nationality outside ETTU member Associations' countries.

#### 4. THE DRAW

4.1 The draw shall be made in public by the ETTU on a date and a place to be published in advance on the official ETTU web site.

4.2 The draw will be made according to the final seeding list. ~~The team seeded number 1 shall be placed in position 1 of Group A; the team seeded number 2 shall be placed in position 1 of Group D; the teams seeded number 3 and 4, shall be drawn between positions 1 of groups B and C. The teams seeded 5-8 shall then be drawn 4 by 4 between the 4 groups on position 2.~~

Clubs from a same Association shall, as far as possible, be drawn into different groups.

~~The teams seeded 9-16 will play a 1<sup>st</sup> stage Champions League home and away match. Each club seeded 9-12 will be freely drawn against 1 club seeded 13-16 (no separation by National Association).~~

~~The losers are relegated to the Europe Cup group round 2.~~

~~The winners will be drawn 4 by 4 between the 4 groups on position 3 of the Champions League groups. This draw will be made after completion of the stage 1 matches.~~

~~The draw for the final rounds will be made after the group rounds. The winner of group A shall be placed at the top of the first half of the draw (position 1) and the winner of group D at the bottom of the second half of the draw (position 8). The winners of group B and C shall be drawn among positions 4 and 5 (bottom of the first half of the draw and top of the second half of the draw). The 4 group runners-up will be drawn in the remaining places so that a group winner and group runner-up from the same group cannot meet in the quarterfinal round. A group winner and group runner-up from the same group may meet in the semifinal or final.~~ There will be no separation by Association for the final round stage.

**Draw procedure as confirmed at the draw and playing system document.**

#### 5. PLAYING FORMAT

**Playing format as confirmed at the draw and playing system document.**

5.1 The ECLW will be played in three stages.

5.2 In the 1<sup>st</sup> stage, the teams seeded 9-12 will each play 1 home and 1 away match round

against the teams seeded 13-16. The lower ranked teams (13-16) have home right for the first leg.

The 4 losers are relegated to the Europe Cup group round 2.

The 4 winners will continue in the ECLW group stage (2<sup>nd</sup> stage).

5.3 In the 2<sup>nd</sup> stage, the teams will be divided into 4 groups of 3 teams and in each group the teams of this group will play each other in order to determine the final ranking order in each group.

The order of play in the group stage will be as follows:

R1 1-3

R2 2-1

R3 3-2

R4 3-1

R5 1-2

R6 2-3

(example R1: 1-3 -> home team = 1, away team =3)

5.4 In a group, 2 match points shall be awarded for a win, 1 for a loss and 0 for a loss in a not played or unfinished match, and the ranking order shall be determined primarily by the numbers of match points gained.

5.5 If 2 or more teams have gained the same number of match points, their relative positions shall be determined by the results only of matches between them, taking successively the numbers of match points, then the ratio of wins to losses in games and then the ratio of wins to losses in points, as far as it is necessary to determine the ranking order.

5.6 If after any step the positions of one or more teams have been determined while others are still equal, the results of matches in which those teams took part shall be excluded from any further calculations needed to resolve the equalities in accordance with the procedure of 5.5.

5.7 If 2 or more teams have gained the same number of match points and have the same ratios of wins to losses in games and points, their relative positions shall be decided by lot.

5.8 In the 3<sup>rd</sup> stage the winners and the 2<sup>nd</sup> ranked teams of the groups will play in a single knock-out competition, with quarter-finals, semi-finals and a final, to determine the winner of the competition.

The home right for the first leg of the quarter-final matches will be given to the 2<sup>nd</sup> ranked teams of the groups, for the semi-final and final matches the home right for the first leg will be given to the lower ranked team of the seeding list.

After the group matches of the ECLW, the four teams ranked on position 3 in the four groups shall continue to compete in the Europe Cup (quarter-finals).

Clubs which continue to compete in the Europe Cup shall comply also with the Europe Cup directives.

5.9 In all stages each tie will be played in 2 legs, home and away.

~~5.10 In the first and in the third stage of the competition, the knock-out competition method consists of 2 clubs playing each other where the loser is immediately eliminated from winning the ECLW and the winner qualifies to the next round. The 2 clubs play 1 two-legged match also called "Home and Away" match. In a "Home and Away" match, the winner is the club with more allocated points than the other one.~~

~~Allocation of points is as follows:~~

~~a. 3 points for the winner of a 3:0 or 3:1 match,~~

- b. 2 points for the winner of a 3:2 match,
- c. 1 point for the loser of a 2:3 match,
- d. 0 points for the loser of a 0:3 or 1:3 match

In a "Home and Away" match, there is a tie between the 2 clubs when each club has the same number of allocated points. In case of a tie, the Golden Match procedure is used. The Golden Match will be started 10 minutes after the away match (2nd leg) is over.

The Golden Match consists of 3 games (sets) best of 3. The club winning 2 games (sets) is the winner.

The team captains chose for the Golden Match each 3 players who are according to the directives eligible to play and chose for each player the position 1, 2 and 3. The team captains have to provide their line up for the Golden Match to the Referee within 3 minutes after the regular away match (2nd leg) is over.

The order of play in a Golden Match shall be A1 v B1, A2 v B2, A3 v B3. The Golden Match is over once one club has won 2 games (sets).

SPECIAL NOTE: \_\_\_\_\_

At regular team matches, the match shall end when a team has won 3 singles even if the "winning club" is already decided before. Walk overs without proof of injury or illness by a medical doctor present at the match will be penalised. Apart from a financial fine, the club whose player(s) made walk over(s) without acceptance of a medical doctor will get 0 points for that team match.

<b>RESULTS</b>				
<b>Leg 1</b>		<b>Leg 2</b>		<b>Who wins?</b>
<b>Team A</b>	<b>Team B</b>	<b>Team A</b>	<b>Team B</b>	
3	3	3	3	<i>Tie</i>
3	3	3	3	<i>Tie</i>
3	3	3	3	<i>Tie</i>
3	3	3	3	<i>Tie</i>
3	3	3	3	<i>Tie</i>
3	3	3	3	<i>Team-A</i>
3	3	3	3	<i>Team-A</i>
3	3	3	3	<i>Team-B</i>
3	3	3	3	<i>Team-B</i>

## 6. PLAYING SYSTEM

6.1 The playing system shall be the Swaythling Cup system (best of 5 singles) and in each individual match, the 5<sup>th</sup> game (set) shall start at 0:0 and play until the first player reaches 6 points (sudden death point at 5:5). In the 5<sup>th</sup> game (set) each player shall serve only once in a row and there will be no change of ends in the 5<sup>th</sup> game (set).

In a match, there will be breaks after each second game (set) only which means no break after game (set) 1 and 3. **No change of ends after games (sets) but change of ends after each individual match.**

6.2 A team shall consist of 3 or 4 players selected from those nominated by the team's club for the event.

It is recommended that a team always arrives at a match with at least 4 eligible players to reduce the risk of walk overs in case player(s) get ill/injured shortly before the match start. When walk overs could have been avoided by the participation of the club's reserve player, the club may be fined by the Club Competition Official.

This recommendation is based on a requirement for fair play towards the ECL, the opponent club, spectators, media and the Table Tennis sport.

6.3 All individual matches (singles) shall be played on the same table.

6.4 The home team is considered to be composed by the players A1, A2, A3 and the visiting team is considered to be composed by the players B1, B2, B3.

The order of play in a team match shall be A1 v B2, A2 v B1, A3 v B3, A1 v B1, A2 v B2, and the match shall end when a team has won 3 singles, each the best of 5 games.

After the second single in a team match, player No. 4 of the team may replace player A1 or A2 (for the home team) respectively player B1 or B2 (for the away team). Such a player substitution must be announced by the respective team captain to the Referee at the latest before the start of the third single.

6.5 Intervals between individual matches shall not exceed 1 minute except for the interval after the second individual match, where a 15 minutes break is accepted. For televised matches or for any other marketing reasons, there shall be no delays. The umpire calls the players in immediately after each interval. If a player is not ready to play within 2 minutes after the umpire called in, this player loses his individual match by Walk-Over (W.O.). After each interval, the players of the next individual match have 2 minutes time for practice. This will be controlled by the umpire. If a player is not ready to start the match immediately after the end of the countdown, she will receive first a warning from the umpire.

Further sanctions will be made in accordance with the respective ITTF regulations.

At each time-out and between each second game (maximum 1 minute), the umpire shall place the Time-Out-Clock on the table in the main camera direction (if available).

Up to 10 seconds after the previous rally finished, except for towelling after every 6 points from the start of each game, the serving player has to start the next rally. For long rallies (umpire decision) maximum 25 seconds are allowed.

6.6 **MULTI BALLS AND BALL BOYS AND GIRLS (BBGs)**

**There will be 70 selected balls for a team match. 35 balls will be used in an individual match, the next**

**35 will be used for the following match and in this time the first 35 will be cleaned so they can be reused for the third match etc. Each team can select in the call area 35 balls, 40 minutes before the team match starts (1 member per team only).**

**During a match, the umpire throws before/after each point a new ball to the server.**

**Balls will be picked up after every game only, by ball collectors (kids or adults). Ball**



collectors shall respect social distancing to players on the field, to team members in the box and to umpires at any time.

The host club has to put on disposal before the match starts 40 balls and the 2 team captains shall choose 20 balls (10 balls each).

In each match 20 balls shall be kept by the umpire who will provide after each point a new ball to the serving player, in case the ball used from the previous rally is not in imminent reach of 1 of the 2 players. Balls remaining in the Field of Play (FoP) will be collected after each rally by ball boys/girls (BBGs) organised by the home club. 2 BBGs shall sit behind the corner board (1 on each long side, places marked "x" on below diagram). BBGs watch the playing field and collect the balls from the floor, and then run back to their zones. BBGs collecting balls should only move in designated areas (marked "→" on below diagram). BBGs have to return the balls to the umpire after each game, during time outs and when the umpire runs out of balls.

Delivery of the balls to the umpire may occur at any time after a distinct signal from the umpire to the BBGs.

Balls leaving the FoP will not be collected during a game.

BBGs move only according to "→" on below diagram to hand over the balls to the umpire.

BBGs shall be dressed in sportswear, preferably similar clothing.

There is no age limit for BBGs, however BBGs shall be mentally and physically able to be fully concentrated and collect balls quickly.

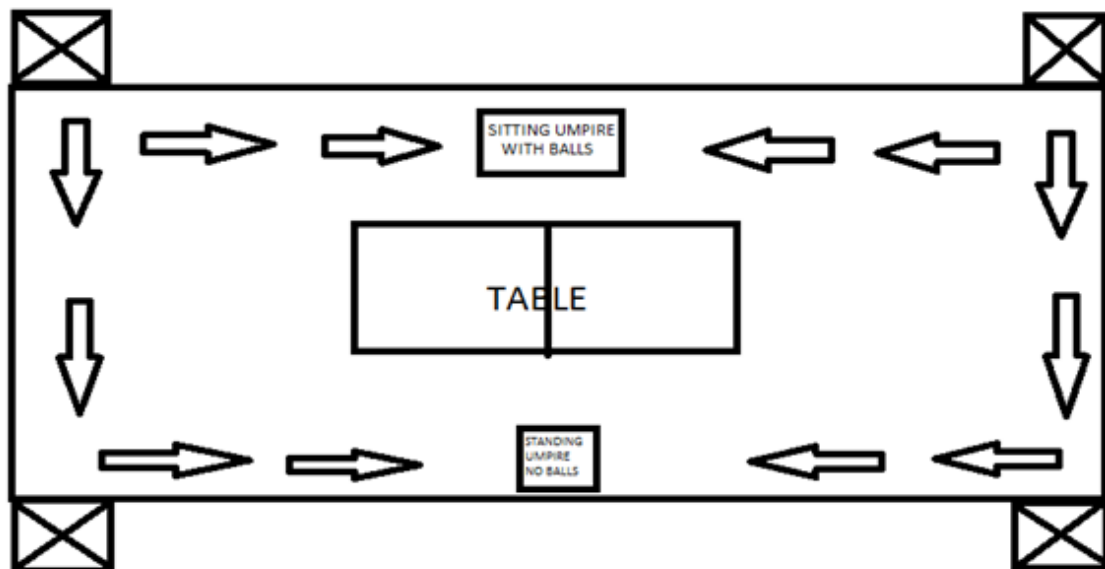
BBGs shall behave and act neutral.

Before the service, players receive the balls from the umpire.

After the rally, players do not collect the balls from the FoP, they continue the game, unless the rally ends in imminent reach of 1 of the 2 players, players can reuse that ball for the next rally.

There shall be 1 chair in each of the x marked boxes so that BBGs do not disrupt the matches.

The clubs are recommended to make a training session with the BBGs.



Playing field with designated zones for BBGs.



Example show court with BBGs zones

## 7. FIXTURES

- 7.1 The competition shall be held each season according to a schedule published by ETTU.
- 7.2 The actual playing season shall be from the day before the first round of the competition until the day after the second final match.
- 7.3 Matches shall normally be played during a date of the scheduled weekend or scheduled week but clubs may agree to play on an earlier date. The club playing at home decides about the playing date and starting time of the scheduled weekend or scheduled week. Once playing date and starting time are fixed, clubs can no more change it unless written authorisation received from ETTU.
- 7.4 Dates and times of the matches have to be approved by ETTU and clubs shall communicate them to ETTU without delay\*.
- 7.5 For the matches the home club shall send the visiting club a written invitation including information about the training sessions and the “daily schedule/programme”, to arrive without delay\* giving details of the location, date, starting time and accommodation possibilities, and shall send a copy of this invitation to the ETTU Secretariat by email. Clubs failing to respect this provision are subject to a fine as defined in the penalty catalogue of the regulations.
- Clubs having players needing a special invitation to obtain visa to travel to different countries must inform the opponent club immediately and the home club has to provide them with such an invitation letter needed. The home club however is not obliged to send such invitation letters by post to a country outside Europe.
- 7.6 ECLW provisional playing dates:
- Stage 1 leg 1: 09-11.10.2020 (teams seeded 9-16)
  - Stage 1 leg 2: 23-25.10.2020 (teams seeded 9-16)
  - Group round 1: 20-22.11.2020 (1v3)
  - Group round 2: 27-29.11.2020 (2v1)
  - Group round 3: 04-06.12.2020 (3v2)
  - Group round 4: 18-20.12.2020 (3v1)
  - Group round 5: 08-10.01.2021 (1v2)
  - Group round 6: 15-17.01.2021 (2v3)
  - Quarter final 1: 12-14.02.2021
  - Quarter final 2: 19-21.02.2021
  - Semi final 1: 19-21.03.2021
  - Semi final 2: 26-28.03.2021
  - Final 1: 09-11.04.2021
  - Final 2: 16-18.04.2021

## 8. COMPETITION HALLS, EQUIPMENT AND PLAYING CONDITIONS

- 8.1 There shall be a playing hall, with preferably a seating capacity of minimum 500 persons and which is large enough to accommodate one (1) playing court (table), in a playing area of at least 14 m long, 7 m wide and 5 m high.
- 8.2 The home club has to put on disposal to their guest club a bench or chairs behind the playing court for 8 persons. Neither the home club nor the guest club can have more than 8 persons there.
- 8.3 All matches in the ECLW shall be played on ITTF approved floor mats except for the stage 1 matches where the use of ITTF approved floor mats is not mandatory but recommended.
- 8.4 The light intensity shall not be less than 800 LUX over the table.
- 8.5 The minimum temperature in the playing area shall not be less than 18° C.
- 8.6 Each club shall notify ETTU the brands and colours of the table, net assembly and ball\*, together with the colour of the playing clothing.
- 8.7 ~~The home club shall notify the visiting team of the colours of its playing clothing and the visiting team shall wear different colours.~~  
Teams have to confirm by latest on Monday, 30th of November their 2 sets of playing clothing (shirts), with a clear difference in the main colour, to use for the matches and send a picture of both by email to [competition@ettu.org](mailto:competition@ettu.org) , and confirm their 1st and 2nd choice.  
In case for a scheduled match the 2 teams have the same or similar main colour on their shirt of their 1st choice, a draw will be made 1 hour before the team match starts to define which team can use for the said match their 1st choice shirt.
- 8.8 The ECLW opts out from ITTF Regulations for International Competitions for advertisements on players' clothing to allow more space on clothing for advertisement. Opting out is only for the sizes and total number of advertisements.
- 8.9 For the ECLW, A-boards or B-boards to surround the whole field of play must be used starting at the quarter-finals.  
LED panels are allowed provided they comply with the ITTF regulation.
- 8.10 Background shall be kept dark.
- 8.11 The playing conditions must be checked and approved by ~~the Referee~~ ETTU, whose decision shall be final. Even in case of disputes about the playing conditions the clubs are obliged to play the match.
- 8.12 There shall be sufficient changing rooms (at least 3, 1 for each of the teams and 1 for the referee/umpires) of good standard, with enough showers and toilets and preferably with lockers for clothing.
- 8.13 Matches shall start at the designated time without delay.
- 8.14 Each club participating in the ECLW must have an ITTF flatness and thickness device and shall provide it for the Referee at least 60 minutes before the match starts.
- 8.15 Each club participating in the ECLW is recommended to have a Time-Out-Clock and shall provide it for the Referee at least 60 minutes before the match starts.
- 8.16 Home clubs must guarantee their guest clubs at least 10% of the seating capacity for spectators and upon request provide in advance information on purchasing prize.

*\*in case of an official ball sponsor, the official ball sponsor's balls shall be used*

## 9. PRACTICE

A practice and warm up schedule will be made available for each team by ETTU.  
~~Practice (at least 2 hours) shall be arranged for the visiting team the evening before the~~

~~match is subject to be played as well as during the day of the match under the same conditions as for the home team with the same equipment as used during the match. Home clubs shall do their utmost arrange at least 1 time training possibility for the guest club in the playing hall before the match.~~

## 10. RESULTS

Immediately after a match the Referee shall send by e-mail to [result@ettu.org](mailto:result@ettu.org) a copy of the results sheet. Upon completion of the match, the ETTU Scorer App ("iScout") will automatically update the website.

## 11. ACCOMMODATION / HOSPITALITY / TRANSPORTATION / MEALS / VISAS

### 11.1 ~~replaced by the ECLW conditions of participation and hygienic guidelines document.~~

~~The home club shall propose to the away club a hotel of good standard (minimum 3 stars), and inform them about the room rates and the hotel's website link without delay\*. In case the away club does not agree on the proposal, the away team is free to choose another hotel. Booking and payment of the hotel is the obligation of the away club. The transport from and to the local airport or from and to the railway station (home club to decide if transport from and to the airport or from and to the railway station) to the hotel or to the playing hall and back must be provided free of charge by the home club. If the visiting club delegation arrives / departs at more than 2 separate times then the visiting club shall be responsible for the additional transport.~~

~~If the away team chooses another hotel than the one proposed by the home team, transportation must be only taken over by the home team if the distance to the playing hall is not more than 5 km further away than the proposed hotel from the playing hall.~~

~~A meal for the visiting team after the match must be provided free of charge by the home team.~~

~~Meal times shall be flexible and co-ordinated with the duration of the match in order to allow the players to have a meal still after the match.~~

~~The maximum number of persons of the visiting club entitled for free transportation and meals as written above shall be 6 persons.~~

~~For the matches, the host club shall provide free hospitality for one (1) day and night for 2 ETTU and 2 Sportradar and 2 Sponsor representatives if requested.~~

~~The home club shall provide one main contact for organisational matters to the visiting club in order to arrange everything smoothly. This "team manager" shall be fluently speaking English.~~

~~For the Quarter-Finals, Semi-Finals & Finals:~~

~~The home team shall prepare an agenda for the visiting team including transport from the airport / station which shall be sent within one week after reception of the arrival time / date of the visiting team to all parties involved.~~

~~Referees have to inform the home club in time about their accommodation needs. The home club has to book and take over the costs and has to arrange for their travel from and to the local airport or from and to the railway station to the hotel or to the playing hall and back, free of charge, and provide with a meal after the match, free of charge.~~

~~The home club has to send to their guest club without delay\* an invitation letter including all needed details so that the delegation of the guest club is able to receive their visas (if needed) in due time. The costs for sending these invitations is at the~~

~~home club's expense unless the guest club requests sending a letter by postal mail to a country outside Europe, than the guest club has to reimburse the home club the costs for the sending.~~

## **12. REFEREES AND UMPIRES**

- ~~12.1 For all matches other than the quarter-final, semi-final and final matches the Association of the home club shall appoint at least three umpires and have to get the prior approval by the ETTU URC. At least one of these umpires shall preferably be an International Umpire and shall fulfil the duties of the Referee.~~
- ~~12.2 For the quarter-final, semi-final and final matches the ETTU URC shall arrange for two International Umpires coming from an Association other than those of the clubs whose teams are involved in the respective match. One of these International Umpires shall fulfil the duties of the Referee. The Association of the home club shall provide International or National Umpires to perform the duties of assistant umpires. If foreign International Umpires are not available for a match, the ETTU URC may nominate an umpire team from the same Association as the home club.~~
- ~~For the semi-finals, one of the foreign umpires shall preferably be an International Referee or International Umpire — Blue Badge and for the finals, both umpires shall preferably be International Referee or International Umpire — Blue Badge.~~
- ~~12.3 In emergency cases, other umpires present at the match may replace the missing nominated umpires, one of them taking over the duty as Referee.~~
- ~~12.4 The umpires appointed by the ETTU shall receive free hospitality (every umpire is entitled for a single room), a daily allowance in accordance with the ITTF Directives for match Officials and shall also get their travel expenses reimbursed by the home club (by economy class train or plane, or by car at 30 eurocents per km plus eventual "vignette" costs, and visa costs) shall be reimbursed by the home club either by bank transfer before the match or latest in cash upon arrival.~~
- ~~12.5 The nominated umpires have to arrange their travel to and from the playing hall as soon as their nomination is received and to inform the home club without delay and also to inform about eventual accommodation needs. The nominated umpires shall use the most economic transport (car, train or flight).~~
- ~~12.6 The Referee shall send immediately after the match the signed score sheet to [result@ettu.org](mailto:result@ettu.org) and within 72 hours after the match the Referees report to [result@ettu.org](mailto:result@ettu.org).~~

## **13. GENERAL COMMUNICATION**

To guarantee a smooth running of the European Champions League Women, all participating clubs must reply to all organisational and communication requests from ETTU latest within 48 hours. Every club must appoint one contact person who is fluent in English.

## **14. MEDIA AND MARKETING**

- 14.1 The ETTU holds the following rights for every team match within the ECCW:
- 14.1.1

- -any kind of Television transmission
- -Internet Broadband Streaming
- -IPTV and Data & Scoring Rights (live, delayed and excerpts)
- -Mobile devices rights and Radio rights

- -the event's marketing and equipment rights

14.1.2 Sportradar has been granted all media rights of the ECCW on a worldwide basis from the ETTU. Thus, only Sportradar has the right to sell, market and/or exploit any media rights (already existing or invented or created in future) in relation to all ECCW competition matches. Sportradar is also allowed to produce ECCW competition matches on their own costs but without having to pay the home clubs any license fee.

Consequently, all parties (e.g. broadcasters, internet platforms, media companies, participating clubs etc.) being interested in exploiting media rights of ECCW competition matches must get in touch (minimum three weeks prior to match start / the deadline for interested (local) TV Broadcaster is minimum 10 days) with ETTU and/or Sportradar. Without written permission from ETTU and/or Sportradar, no party has the right to exploit any of above mentioned media rights in any existing or future developed exploitation ways.

14.2 Every club in the European Club Competition- Women (ECCW) has to fulfil the obligations regarding the production of live streaming. Therefore, every club has to provide a dedicated physical Internet connection with a minimum UPLOAD bandwidth of three Megabit/sec. Additionally, every club has to provide a Provision of a router with at least four Ethernet ports (DHCP configuration).

Starting with the ECLW quarter-finals, the home clubs are obliged to stream its matches according to the guidelines for streaming production.

Guidelines for streaming production will be available.

Further details are laid down under item 15.

14.3 Each club participating in the ECCW has to provide the necessary facilities and staff for the electronic transmission of each home match by a "live ticker" system. The scoring of all matches will be done using the ETTU Scorer App ("iScout). Prior to the start of the first round of the competition, each club must nominate minimum 1 official to train in the use of the App.

Sportradar will provide an online session to introduce and demonstrate the use of the App. This will be open to all nominated ETTU Scorer officials which need to be at least 18 years old. Following this session, officials will be required to complete their training using the Sportradar systems and ultimately score a training match in order to ensure the correct skill level is achieved. If the ETTU scorer official does not pass training in the first instance, it is possible to train further and submit another training match.

In order to train, the nominated official must have access to an android phone (the app is not compatible with iPhone) and a computer.

One dedicated ETTU scorer official will be required per match (it is not possible to have two persons for one match!).

Each club will be assigned one android device to be used during competitions by ETTU and Sportradar. It is the responsibility of the club to ensure this device is available to the ETTU Scorer official two hours before the start of the match. It is also the responsibility of the club to ensure that a wifi internet connection (minimum 3MB upload) is available for use by the scorer.

Each club must ensure that a suitable position close to the table is assigned to the ETTU Scorer official, with a good view of both the table and the scoreboard.

#### 14.4 **CLUBS - ORGANISERS**

The clubs are responsible to organise and host all of their home matches. Thus, the home club is the “organiser” of all of its home matches.

All organisers must do their utmost to make sure that only pre-announced<sup>1</sup> companies are producing the matches for TV channels, online platforms etc.

Unauthorised streams (e.g. from TV broadcasters, production companies, spectators using their mobile phones, etc.) as well as unauthorised tickering must be stopped by the organisers (pre-announced production teams are also allowed to stop unauthorised streaming and tickering). Organisers must also inform their supporters about this fact.

#### 14.5 **PROMOTIONAL ACTIVITIES**

It is recommended to issue a programme leaflet by the organising club for every home match. This programme leaflet shall also be in English and include the ECLW and ETTU logos.

It is recommended to invite local press to the game and get free access to all relevant areas of the competition hall. A convenient number of seats to be arranged for the journalists along the court. These seats to be equipped with tables and power sockets.

The ECLW-Social Media Concept needs to be implemented.

It is recommended that the home club is writing a press release/article about the match in the local language that should be distributed to all relevant national, regional and local media.

Each club is obliged to upload 5 photographs taken from every home match with cleared<sup>2</sup> rights to the Media Shuttle Portal. Each Club grants to Sportradar/ETTU free of charge the unrestricted worldwide exploitation rights concerning the respective uploaded photos.

All participants/teams grant to Sportradar/ETTU free of charge the unrestricted worldwide exploitation rights concerning all photos and video material taken at the competition.

#### 14.6 **PHOTOGRAPHS**

Participating clubs shall upload the following photographs to the Media Shuttle Portal<sup>3</sup> three weeks before the competition starts:

- Upload Team Photograph

---

<sup>1</sup>Pre-announced companies: LAOLA1.tv / ETTU.tv production teams and other interested media companies which have the written permission from Sportradar to broadcast the match.

<sup>2</sup>Each Club shall be responsible and liable for the clearing of rights of third parties including, but not limited to copyrights and personal rights, and shall indemnify and keep indemnified Sportradar / ETTU and its officers, employees and agents against any liability, loss damage, costs or expenses arising therefrom upon first request.

<sup>3</sup>If made available to the clubs



An up-to-date team photograph is mandatory. The team photograph must be 4000 x 2500 pixels in size and the resolution must be a minimum of 300dpi. Those in the photo should be dressed appropriately and wearing their official match uniform.

- Upload Photographs of each registered player

The individual player photograph must be 1800 x 2800 pixels in size and the resolution must be a minimum of 300dpi. The player in the photo must be dressed appropriately and wearing the official club's uniform. Individual photos must have a light background of only one colour. If possible, all individual player photographs should have the same setting (background, clothing etc...).

The photographs will be displayed on the ETTU website and can also be used for promotional reasons.

#### 14.7 **INTEGRATION VIDEO PLAYER**

Every club must integrate the OTT Partner Player video player on its club website.

#### 14.8 **OFFICIAL MATCH PROTOCOL**

The organisers are responsible for the preparation and smooth running of all home matches.

They are also responsible for the application of the Official Match Protocol.

Each participating club is responsible for delivering all elements of this Official Match Protocol (under the supervision of the ETTU). It will be made available.

The players must give a short statement/interview about the match if requested by the press or media (local or from ETTU.TV).

#### 14.9 **PLAYING CLOTHING**

~~The home club shall notify the visiting team of the colours of its playing clothing and the visiting team shall wear different colours according to the ITTF Regulations for International Competitions.~~

Teams have to confirm by latest on Monday, 30th of November their 2 sets of playing clothing (shirts), with a clear difference in the main colour, to use for the matches and send a picture of both by email to [competition@ettu.org](mailto:competition@ettu.org), and confirm their 1st and 2nd choice.

In case for a scheduled match the 2 teams have the same or similar main colour on their shirt of their 1st choice, a draw will be made 1 hour before the team match starts to define which team can use for the said match their 1st choice shirt.

The ECLW opts out from ITTF Regulations for International Competitions for advertisements on players' clothing to allow more space on clothing for advertisement. Opting out is only for the sizes and total number of advertisements.

#### 15. **INTERNET – STREAMING (not valid for visiting teams)**

Every home club has to produce online streaming of its matches starting with the quarter-finals according to the following technical requirements:

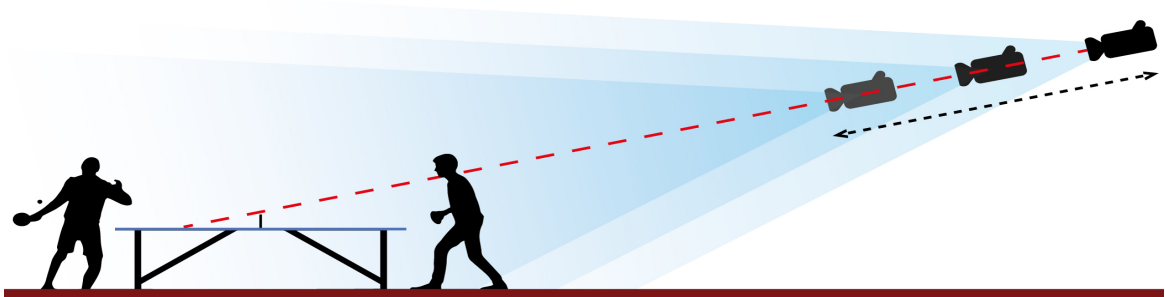
a) Internet connection with a minimum dedicated UPLOAD bandwidth of three megabit/sec

b) Installation and access to the dedicated internet connection at the main working position



- c) Provision of a router with at least four ethernet ports - DHCP configuration
- i) TCP-Port 80, 443, 1935 and 49221 (incoming/outgoing)
- ii) UDP-Port 2077, 2088 and 49221 (incoming/outgoing)
- d) Director's workplace for 3 persons inside the main hall or very close to it
- e) Distance TT cameras to director's workplace: max 40m
- f) Distance director's workplace to access the router: max 5 m

Reference how the main camera shall be placed:



This figure acts as an example. It is mandatory that the camera is positioned in a way that the backside of the table is visible.  
The production team is allowed to change/modify the camera position that was provided by the club.

The home clubs shall contact Sportradar at [tabletennis@sportradar.com](mailto:tabletennis@sportradar.com), [Program-Management@sportradar.com](mailto:Program-Management@sportradar.com) and [av-proco@sportradar.com](mailto:av-proco@sportradar.com) minimum 2 weeks before the match day in order to check all technical matters related to online streaming. The home club shall send the team line up (match order of play/pairings) latest 40 minutes before the first match starts to following mail addresses:

[av-mcr@sportradar.com](mailto:av-mcr@sportradar.com)  
[fixtures@sportradar.com](mailto:fixtures@sportradar.com)  
[events@sportradar.com](mailto:events@sportradar.com)  
[Program-Management@sportradar.com](mailto:Program-Management@sportradar.com)  
[av-proco@sportradar.com](mailto:av-proco@sportradar.com)

If, for any reason that information cannot be provided in time, the home club is requested to send it as soon as possible and inform the mail addresses above about the reason for the delay and the (approximate) time of provision.  
In case of any changes on short notice (such as injuries, breaks, delays, etc.) the home club also has to send a mail with any known information as soon as possible to the above mentioned mail addresses.

#### INTERNET – STREAMING PRIOR QUARTER-FINALS

A home club planning to organise an internet livestream prior the quarter-finals (in the group stage) shall contact ETTU ([club@ettu.org](mailto:club@ettu.org)) and Sportradar ([tabletennis@sportradar.com](mailto:tabletennis@sportradar.com), [Program-Management@sportradar.com](mailto:Program-Management@sportradar.com), [av-proco@sportradar.com](mailto:av-proco@sportradar.com)) minimum 2 weeks before the match day.

Home clubs may be granted the permission to produce and broadcast a signal for internet live streaming only if home clubs contact the above addresses in time and can guarantee a geo-block (if technically possible) of the streaming on its national territory. A further condition for receiving permission is to provide Sportradar with the uplink

signal free of charge and to be able to comply with the technical requirements which will be made available in the guidelines.

**16. ENTRY CARDS / VIP**

If requested, the Organising Club shall provide ETTU with five (5) VIP entry tickets (free of charge) for ETTU representatives, their guests, partners, sponsors, suppliers, etc.

**17. VIP CARE**

There shall be a special VIP-room, where drinks and snacks are served to honorary guests, sponsors, suppliers, etc., free of charge.

**18. WINNER'S CEREMONY**

There shall be a winner's ceremony at the end of the Event (Final 2). The winner's podium (for 14 persons) shall be separated from the spectators and from the press area.

The team and player announcement must also be done in English.

**19. TROPHIES and AWARDS**

After the 2<sup>nd</sup> final match the winner shall receive the appropriate trophy, the winner and the runner-up shall receive medals by ETTU.

Prize Money for ECLW clubs will be determined by ETTU.

**20. FINANCIAL CONDITIONS**

20.1 The entry fee shall be paid according to Directive 2.

20.2 The clubs participating in the ECLW shall provide a list of the team sponsors (to fill in at the "additional information documents" for clubs).

**21. PRIVACY POLICY**

By registering and entering the ETTU Club Competition, each registered and entered person agrees and gives his/her consent to the ETTU Privacy Policy as laid down on the ETTU website ([www.ettu.org](http://www.ettu.org)).

**22. PENALTIES**

The Clubs may be fined by the ETTU Club Competition Official for any contravention to the provision of these directives in accordance with the Penalty Catalogue.

**23. DEFINITIONS**

\*Delay: Official documents, e.g. invitation letters, hotel proposition, visas etc as described in the Regulations or the Directives above shall be sent by the home club within seven days if no other delay given by ETTU. If the respective home club fails to do so and the other party has financial losses because of this, the ETTU Club Competition Official may decide to impose towards the home club a reimbursement of the additional costs occurred to the guest club.

\* A non-European player is a player with a nationality outside ETTU member Associations' countries.

**24. FORCE MAJEURE**

In case of "force majeure"\*, the ETTU Executive Board may decide, after consultation with the Management Board, the Club Competition Official, the Secretary General and

Sportradar, on any amendment to the general organisation and planning of the European Club Competitions. Such amendment may come into force also during an ECC season.

\*Force majeure is extended to the well-being and safety of all involved parties including the need to guarantee the best possible continuation of the ECC.

## **25. JURISDICTION**

COVID-19 responsible person LOC:

Günther Renner, guenther.renner@froschberg.at +43 676 9581858

COVID-19 responsible person ETTU:

Alen Ivancin, Champions League event manager, competition@ettu.org +385 992065844

Wherever in the hygienic guideline document reference is made to authorisation or permission, the persons in charge for ETTU and for the LOC will be the same as the above stated COVID-19 responsible persons.

A team wishing to protest about any aspect of a match or against any other matter, shall address to the Jury.

The Jury shall consist of 1 representative of the organising club (LOC), 1 ETTU representative and the Referee. Each member of the Jury shall have 1 vote and any decision is taken by the majority of the votes.

Where the ECLW hygienic guideline and / or the ECLW conditions of participation document(s) state any different information to the directives, the wording of the hygienic guideline and conditions of participation documents are decisive.

\*\*\*\*\*